

- Indoor installation
- Sheet steel construction
- Epoxypolyester painted
- Key lock

AVTPSC housing have been designed for surveillance applications in places highly exposed to vandalism (underground parking lots, subway stations, prisons, police stations, corridors, supermarkets, etc).

AVTPSC is made of sheet steel (1.5mm thick) and painted with epoxypolyester powder.

The housing is equipped with an internal bracket for the camera attachment and adjustment.

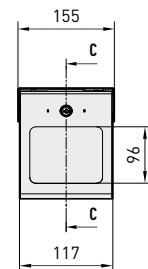
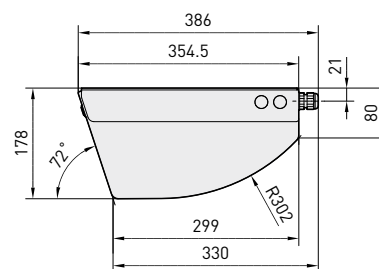
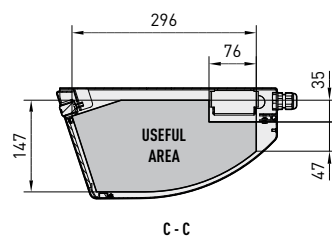
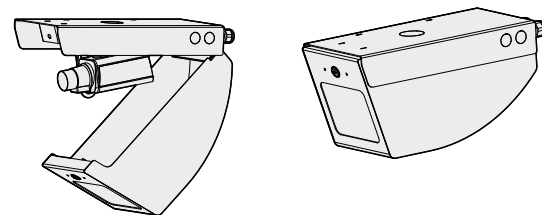
The compass opening allows ease installation and maintenance. A 4mm thick PMMA glass is fixed on the front.

The cable outlet is made possible from the fixing base, from both sides (left or right) and from the 2 M20 cable glands on the back side. AVTPSC can eventually be equipped with heater and camera power supply.



4

VANDAL RESISTANT HOUSINGS



The values are in millimeters.

TECHNICAL DATA

AVTPSC

Model	
AVTPSC0A000	Vandal resistant wedge housing with common lock and key

GENERAL

Build in sheet steel 1.5mm thick (0.06in)
 Epoxypolyester powder painted RAL9002
 Compass opening

MECHANICAL

External dimensions (BxHxL): 354x178x155mm (14x7x6.1in)
 Common key locked
 Cable outlet through fixing side, on both sides (right and left) or 2 M20 cable glands
 Window dimensions: 117x96mm (4.6x3.8in)
 PMMA glass 6mm (0.2in) thick

ELECTRICAL

Heater Ton 15°C+/-3°C (59°F +/-5°F) Toff 22°C+/-3°C (71°F +/-5°F)

- IN 12V DC/24V AC, consumption 20W max
- IN 115/230V AC, consumption 40W max

Camera power supply

- IN 100-240V AC - OUT 12V DC, 50/60Hz, 1A
- IN 230V AC - OUT 24V AC, 50Hz, 400mA

ACCESSORIES

OAVTPSCH1	Heater 115/230V AC
OAVTPSCH2	Heater 12V DC/24V AC
OAVTPSCPS1	Wide range power supply IN 100-240V AC - OUT 12V DC
OAVTPSCPS2	Power supply IN 230V AC - OUT 24V AC

ENVIRONMENT

Indoor
 Operating temperature with heater: -20°C / +50°C (-4°F / +122°F)

COMPLIANCE TO

CE according to EN 61000-6-3, EN 60065, EN 50130-4
 Impact resistance IK08 according to EN 50102

SPARE PARTS LIST

OVET2TPSC	Spare PMMA glass
OSER3	Spare key/lock

4

VANDAL RESISTANT HOUSINGS



Unit Weight:
 AVTPSC 3.5kg / 7.7lb

Package Weight:
 AVTPSC 3.9kg / 8.6lb

Package Dimensions (BxHxL):
 AVTPSC 18x20.5x37.5cm / 7.1x8.1x14.1in

Master Carton:
 AVTPSC 6 units