

DS-KABD8003-RS2 Protective Shield



- Convenient design available for the 2 module surface mounting of the modular door station (DS-KD8003-IME1 or DS-KD8003-IME2)
- Material: SECC

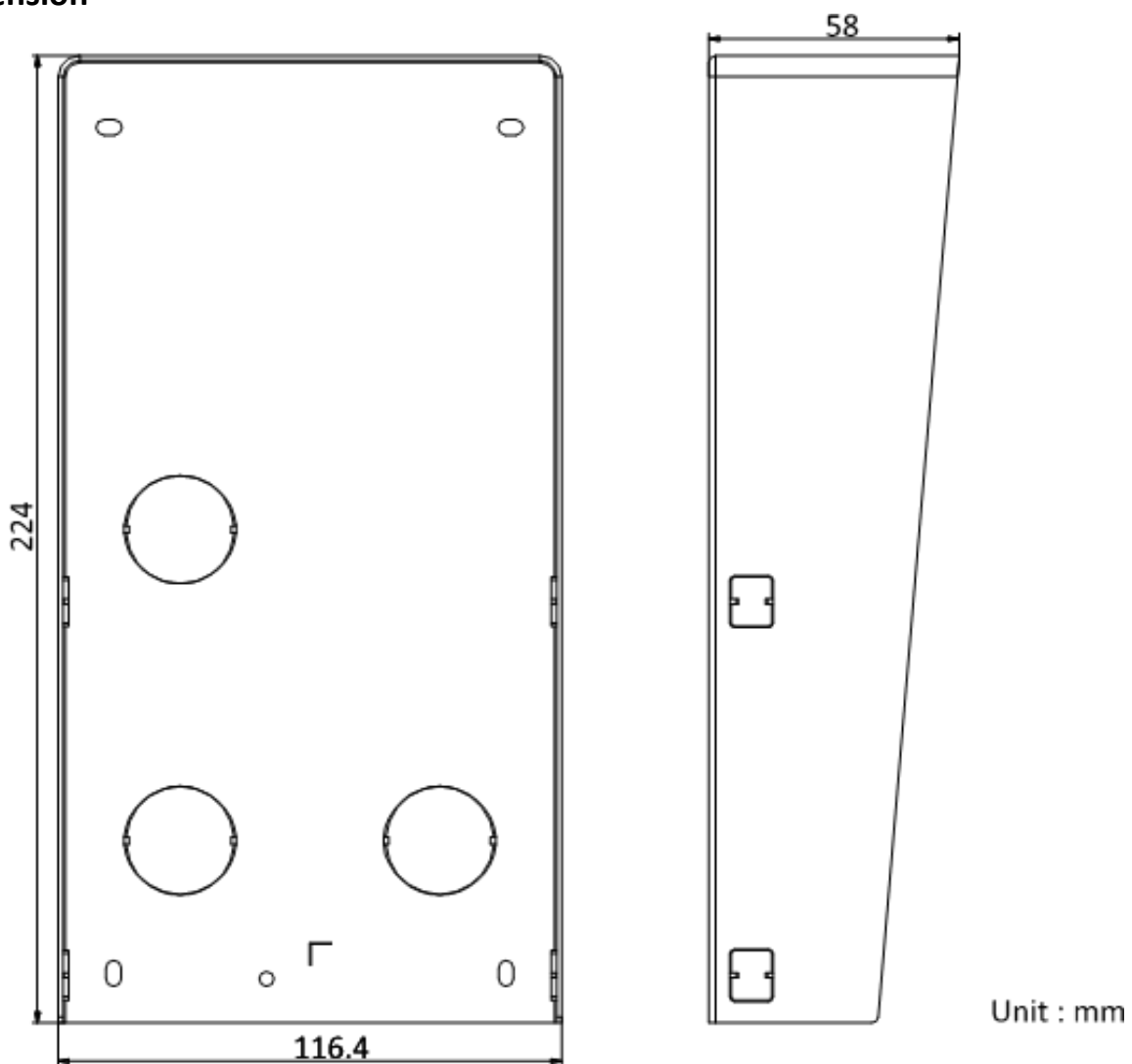
▪ **Specification**

General	
Working temperature	-40 °C to 60 °C (-40 °F to 140 °F)
Weight	Net weight: 0.525 kg
	Gross weight:0.820 kg
Working temperature	-40 °C to 60 °C (-40 °F to 140 °F)
Working humidity	10% to 95% (No condensing)
Dimension (W × H × D)	224 mm × 116.4 mm × 58 mm (8.82" × 4.58" × 2.28")
Material	SECC

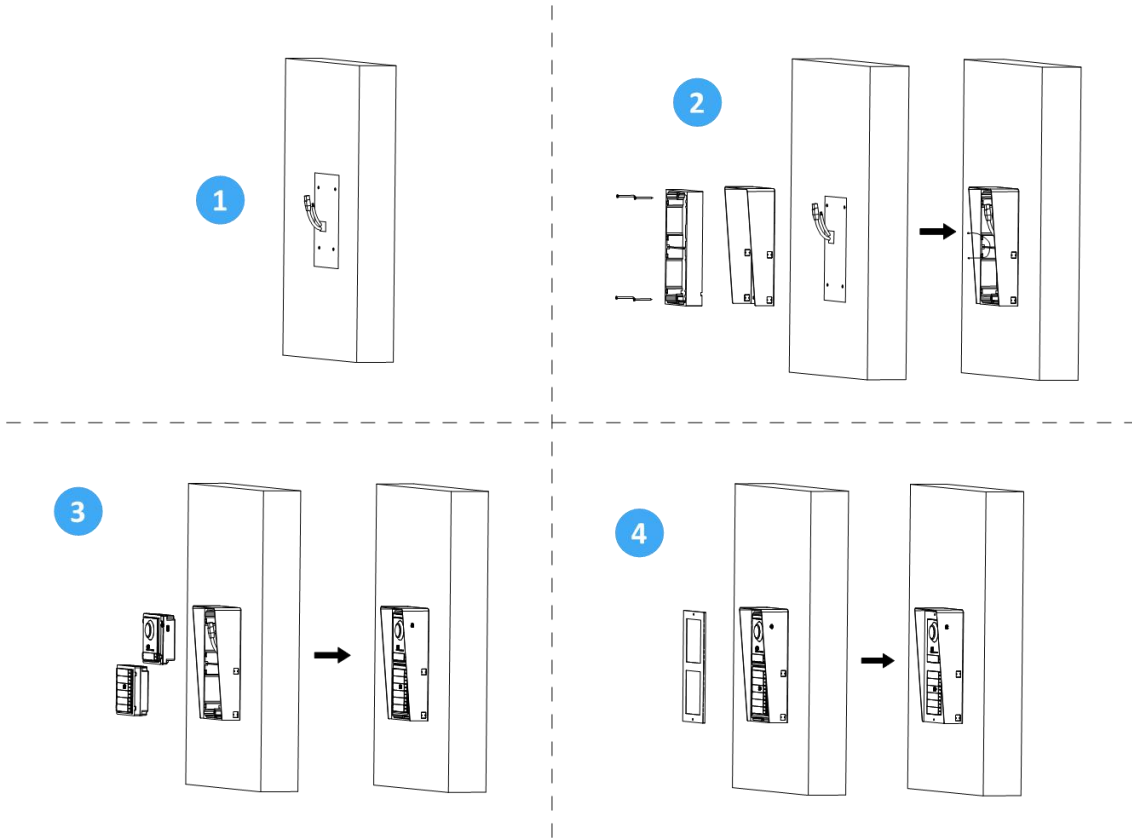
▪ **Available Model**

DS-KABD8003-RS2

▪ **Dimension**



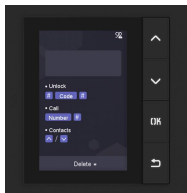
Unit : mm



▪ Accessory



DS-KD8003Y-IME2/S



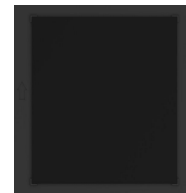
DS-KD-DIS



DS-KD8003-IME1#EU



DS-KD8003-IME1/S



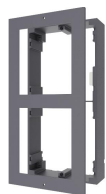
DS-KD-BK



DS-KD8003-IME2/S



DS-KD-KP/S



DS-KD-ACW2



DS-KD8003-IME1(B)/S



DS-KD-ACW2/S



DS-KD8003-IME2



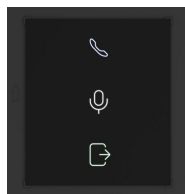
DS-KD8003Y-IME2/NS



DS-KD8003-IME1



DS-KD8003-IME1(B)/NS



DS-KD-IN



DS-KD-KK/S



DS-KD-KP



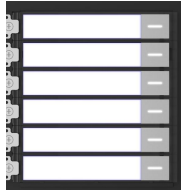
DS-KD-PMR



DS-KD8003-IME1/NS



DS-KD8003-IME1(B)/Surface



DS-KD-KK



DS-KD-KP#EU



DS-KD8003Y-IME2



DS-KD-ACW2#EU



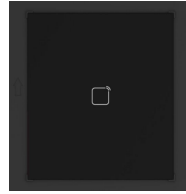
DS-KD8003-IME2/NS



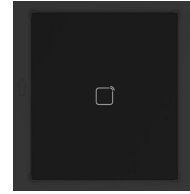
DS-KD-INFO



DS-KD8003-IME1(B)



DS-KD-M



DS-KD-E

Headquarters

No.555 Qianmo Road, Binjiang District,
Hangzhou 310051, China
T +86-571-8807-5998
www.hikvision.com



Follow us on social media to get the latest product and solution information.

